

# CINCINNATI MACHINES



## #2 UNIVERSAL TOOL & CUTTER GRINDER

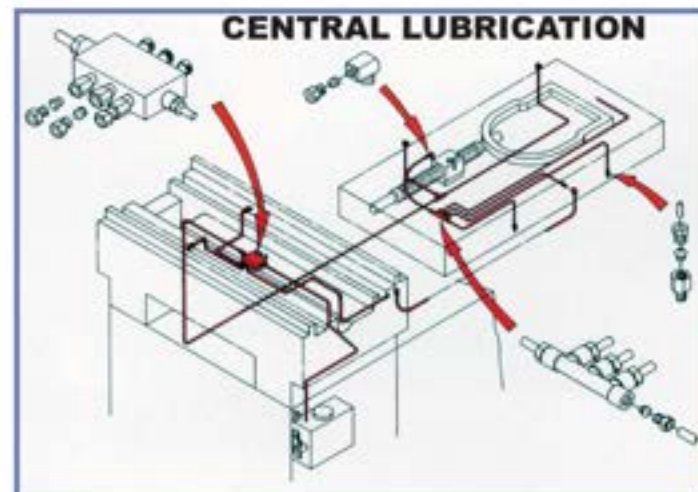
**THE INDUSTRY  
STANDARD  
FOR PRECISELY GRINDING  
ALL KINDS OF  
CUTTERS AND TOOLS**

Precisely grind, sharpen, and recondition parts and tools with complex shapes. Most tool grinding operations can be performed with the large compliment of standard tooling supplied with the machine. In addition, Cincinnati Machines #2 Universal Tool & Cutter Grinder can also be adapted to do light cylindrical, surface, and internal grinding jobs. A wide variety of optional accessories allow you to extend the versatility of the basic machine to meet your specific needs.

### CONSTRUCTION FEATURES

Cincinnati Machines #2 Universal Tool & Cutter Grinder features:

- \*Heavily ribbed meehanite castings
- \*Swivelling and tilting wheelhead and workhead
- \*Swivel table
- \*Centralized lubrication system
- \*Anti-friction ball-track table ways
- \*Multiple versatile table feed controls, including differential control
- \*Spring-cushioned table dogs
- \*Large compliment of standard equipment
- \*Large variety of available optional accessories





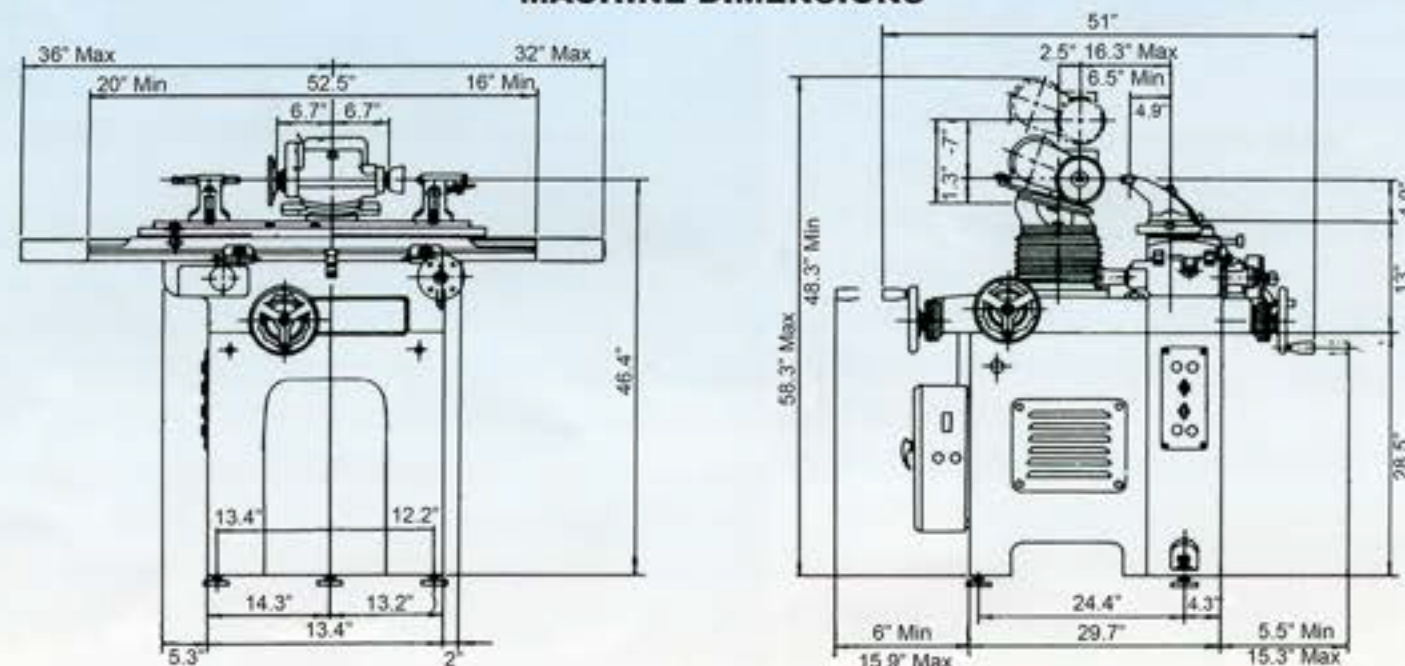
## MACHINE SPECIFICATIONS

<b>Capacity</b>	
Longitudinal movement of table	15.7"
Distance between center	27.5"
Cross movement of saddle	9.8"
Workhead taper	MT # 5
	NT50 or BT50
<b>Table</b>	
T-slot	0.59" (+0.0019" - +0.0039")
Table working range	5.47" x 37"
Wheel speed	2600, 3700, 6200 rpm
Wheel motor	1.5 HP (1.1kW)
<b>Range of Movement</b>	
Rotative angle of table	±60°
Jog adjustment of table	±10°
Vertical movement of wheelhead	9.8"
Slope of wheelhead	±15°
Rotative angle of wheelhead	360°
Distance between center of spindle and table	Max. 11.8" min. 1.96"
Distance between center of spindle and T-slot	Max. 16.3" min. 6.5"
<b>Dimension</b>	
Floor space	61" x 68" x 58"
Net weight	2,560 lbs

# CINCINNATI MACHINES



## MACHINE DIMENSIONS



## MACHINE STANDARD EQUIPMENT

Work head
Left-hand & right-hand tailstock
Diamond dresser holder
Wheel guards
Wheel guard holders, long & short
Universal tooth rest plate and blade holder extension
Center gauge
Collet wrench
Plain tooth rest holder, with offset blade
Ejector rod
T-wrench for grinding wheel sleeve
Sleeve extracting bar
Pin wrench
Micrometer adjustable toothrest, with round top blade
Leveling pads, 3 pc
Touch-up paint
Plain tooth rest holder, with offset blade
Reducing collet b & s no. 12 x no. 10, or mt no. 5 x no. 4
Reducing collet b & s no. 12 x no. 9, or mt no. 5 x no. 3
Reducing collet b & s no. 12 x no. 7, or mt no. 5 x no. 2
Grinding wheel sleeves, 5 sets
Grinding wheels (6" x 3/4" x 1-1/4", 6" x 1/2" x 1-1/4" [two], 3-1/2" x 1-1/2" x 1-1/4", 4" x 1/16" x 1/2", 5" x 1-1/2" x 1-1/4" & 3" x 1/2" x 1/2")
Double end wrench, nut wrench & allen wrench
Spacer for 1/8" dia. Grinding wheel
Center for workhead spindle b & s no. 7 (or m.l. #2)
4" spindle extension
4" extension wheel sleeve and collar
Belt for spindle drive (poly-flex belt)
Draw-in bolt for workhead and washer
Extension and washers of slit-saw and side-mill cutters

## OPTIONAL EQUIPMENT AND ACCESSORIES

- #2 RADIUS GRINDING ATTACHMENT (1')
- #1 RADIUS GRINDING ATTACHMENT (2')
- SPRING COLLET CHUCK 6-25mm
- CYLINDRICAL GRINDING ATTACHMENT  
Includes 4" Chuck & Back Plate  
(Extra Work head Not Included)
- CUTTING FLUID SYSTEM
- DRILL POINT GRINDING ATTACHMENT
- DUST COLLECTION SYSTEM
- FACE MILL GRINDING ATTACHMENT
- EXTENDED GRINDING WHEEL SPINDLE
- HELICAL GRINDING ATTACHMENT
- INDEXING ATTACHMENT FOR WORKHEAD
- INTERNAL GRINDING ATTACHMENT
- LATHE & PLANER TOOL GRINDING ATTACHMENT
- SURFACE GRINDING ATTACHMENT
- HYDRAULIC POWER TABLE FEED  
(Factory Installation Only)